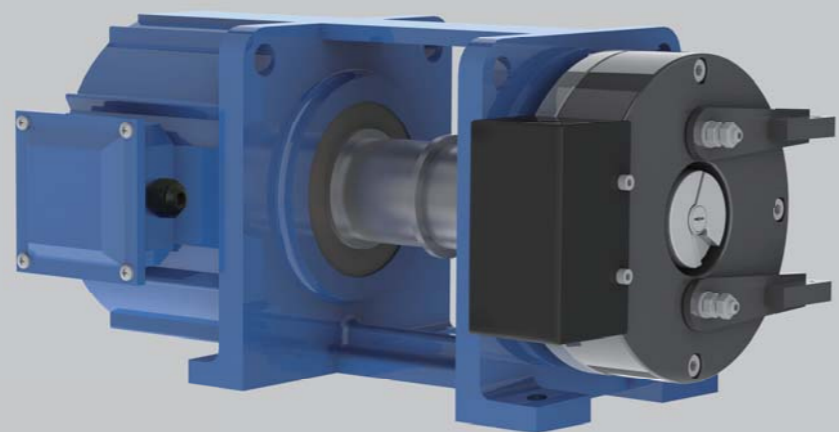


MGD65

Permanent Magnet Synchronous Gearless Traction Machine-Belt Type

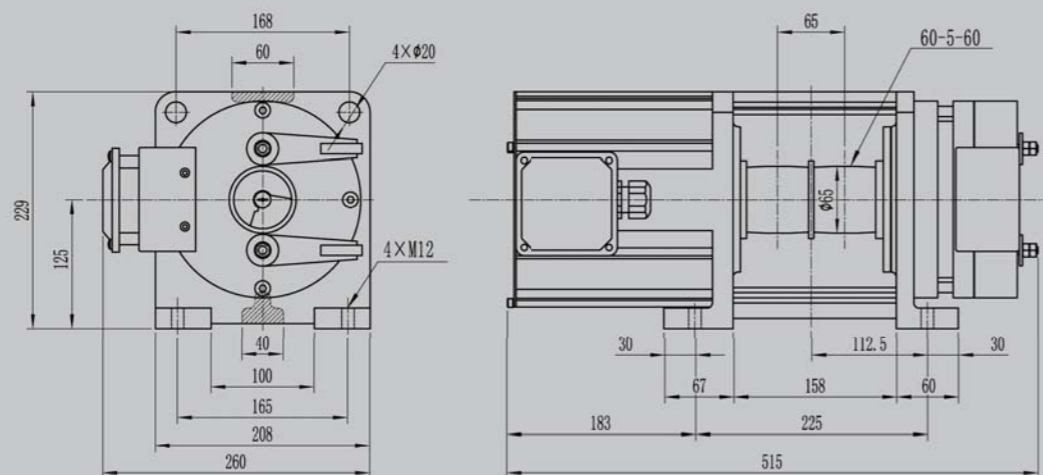
永磁同步无齿轮钢带曳引机



| | | | | | |
|-------|-------------|-------------|-------|------------------|--------------|
| 电源电压 | Voltage | 220V / 380V | 曳引比 | Roping | 2:1 |
| 额定载重 | Elv.Load | (320~400)kg | 额定梯速 | Elv.Speed | (0.3~0.5)m/s |
| 钢带轮直径 | Sheave Diam | 65mm | 工作制 | Duty | S5-25% |
| 防护等级 | IP Code | IP41 | 最大轴静载 | Max. Static Load | 1500kg |
| 绝缘等级 | Ins.Class | F | 自重 | Weight | 55kg |
| 制动器 | Brake | DC110V 1.8A | | | |

※ 制动器的电压值表示启动及维持电压。 Brake voltage corresponds to its Start&Sustaining voltage.

安装尺寸图 DIMENSIONS



规格表 SPEC.SHEET

| 型号 | 规格 | 额定载重 | 额定梯速 | 钢带轮直径 | 钢带槽 | 电源电压 | 额定电流 | 额定功率 | 额定转速 | 额定频率 | 额定转矩 | 电机极数 |
|-------|---------|-----------|------------|-------------|--------|---------|---------|-------|-------|-------|--------|-------|
| Type | Spec. | Elv. Load | Elv. Speed | Sheave Dia. | Groove | Voltage | Current | Power | Speed | Freq. | Torque | Poles |
| | | kg | m/s | mm | | V | A | kW | r/min | Hz | N-m | |
| MGD65 | 320-0.3 | 320 | 0.3 | 65 | 2×60 | 220/380 | 3.5 | 0.6 | 176 | 23.5 | 30 | 16 |
| MGD65 | 320-0.4 | 320 | 0.4 | 65 | 2×60 | 220/380 | 3.5 | 0.7 | 235 | 31.3 | 30 | 16 |
| MGD65 | 320-0.5 | 320 | 0.5 | 65 | 2×60 | 220/380 | 4 | 0.9 | 294 | 39.2 | 30 | 16 |
| MGD65 | 400-0.3 | 400 | 0.3 | 65 | 2×60 | 220/380 | 4.5 | 0.7 | 176 | 23.5 | 40 | 16 |
| MGD65 | 400-0.4 | 400 | 0.4 | 65 | 2×60 | 220/380 | 4.5 | 1.0 | 235 | 31.3 | 40 | 16 |
| MGD65 | 400-0.5 | 400 | 0.5 | 65 | 2×60 | 220/380 | 5 | 1.2 | 294 | 39.2 | 40 | 16 |

注 Remark:

1、本机型用于无机房。 The machine is used for machine roomless.